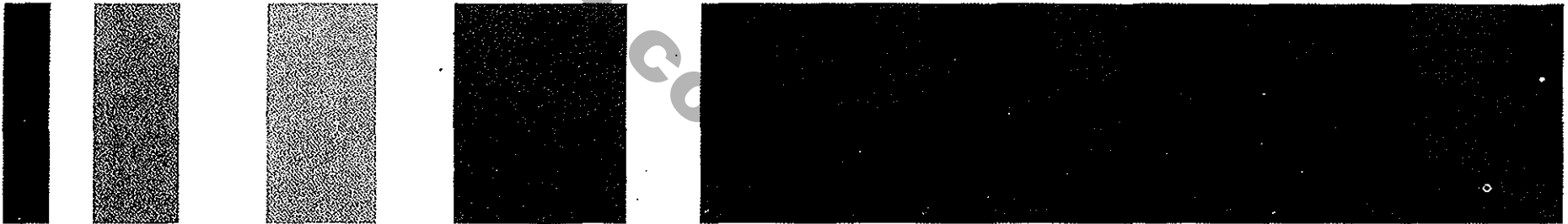


UTV

**600/660/700UTV**

**ENGINE PARTS CATALOG**



## 前言

用户订购零件时请参考本册，若与实车不同之处，以实车为准。如欲知某零部件的名称、件号或装配关系，可按零部件的形状，在有关的插图中查找，可知其装配位置。然后按图上的序号在相应的表格中即可查到零部件的名称、件号和数量。后续更改，不再通知。

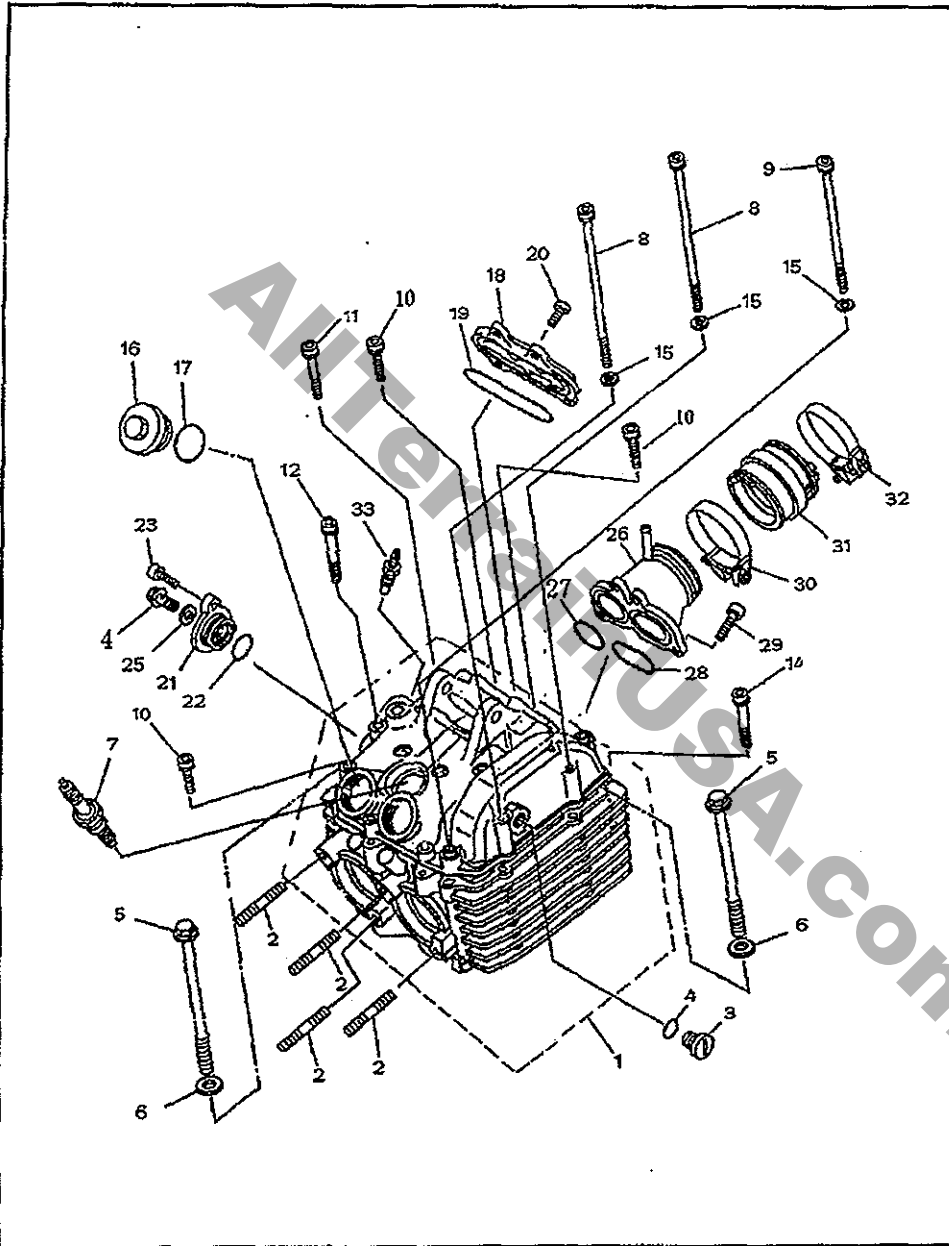
## FOREWORD

Please make reference to this book when you plan to purchase the parts. Any difference against the real motorcycle, please do as per the real. To get information concerning a certain component part, first locate, by its shape, the part in the illustration which show its fitting position, then find out the reference number of that part and look it up the corresponding table where all information about the part are provided, such as the name, part number, quantity and/or its fitting relationship with other parts. Any modifications will not be informed ahead of time.

目 录

CONTENTS

一、气缸头组件 CYLINDER HEAD	1
二、气门摇臂组件、气门 VALVE SWING ARM COMP&VALVE	3
三、气缸体 CYLINDER BODY	4
四、气缸体 660CYLINDER	5
五、气缸体 600CYLINDER	6
六、凸轮轴组件、正时链轮 CAMSHAFT CHAIN	7
七、曲柄连杆,活塞 700CRANKSHAFT PISTON	8
八、活塞 660CRANKSHAFT PISTON	9
九、活塞 600CRANKSHAFT PISTON	10
十、曲轴箱 CRANKCASE	11
十一、曲轴箱盖 CRANKCASE COVER 1	13
十二、传动机构 TRANSMISSION	14
十三、中间传动系 MIDDLE DRIVE GEAR	15
十四、离合器 CLUTCH	17
十五、换档凸轮,拨叉 SHIFT CAM FORK	18
十六、机油泵 OIL PUMP	19
十七、超越离合器 STARTER CLUTCH	21
十八、磁电机 GENERATOR	22
十九、水泵 WATER PUMP	23
二十、化油器 CARBURETOR	24
二十一、滤清器座	25
二十二、风扇	26



## 一.气缸头组件 CYLINDER HEAD

序号 No.	零部件图号 Part No.	零部件名称 及规格	Part Name And Standard	数量 QTY	备注 REMARK
1	12000-F39-0000	气缸头组件	CYLINDER HEAD ASSY	1	
2	GB/T 899-1988	双头螺柱 M8×45	STUD BOLT M8×45	4	
3	12371-F39-0000	观察孔盖	HAND HOLE COVER	1	
4	91217-F39-0000	O型密封圈 13.4×2.35	O-RING 13.4×2.35	1	
5	90033-F39-0000	带盘螺栓 M9×109	BOLT M9×109	4	
6	90601-F39-0000	垫圈 10×19×2	WASHER 10×19×2	4	
7	33300-F39-0000	火花塞(NGK DPR8EA)	SPARK PLUG(NGK DPR8EA)	1	
8	GB/T 70.1-2000	内六角圆柱头螺钉M6×130	BOLT M6×130	2	
9	GB/T 70.1-2000	内六角圆柱头螺钉M6×115	BOLT M6×115	1	
10	GB/T 70.1-2000	内六角圆柱头螺钉 M6×25	BOLT M6×25	5	
11	GB/T 70.1-2000	内六角圆柱头螺钉 M6×40	BOLT M6×40	2	
12	GB/T 70.1-2000	内六角圆柱头螺钉 M6×55	BOLT M6×55	6	
13	GB/T 70.1-2000	内六角圆柱头螺钉 M6×55	BOLT M6×55	1	
14	GB/T 70.1-2000	内六角圆柱头螺钉 M6×50	BOLT M6×50	1	
15	90602-F39-0000	垫圈 6.5×11.3×1.6	WASHER 6.5×11.3×1.6	3	
16	12362-F39-0000	排气门盖	OUTLET VALVE COVER	2	
17	91201-F39-0000	O型密封圈 31.7×2.4	O-RIN 31.7×2.4	2	
18	12361-F39-0000	进气门盖	INLET VALVE COVER	1	
19	91202-F39-0000	O型密封圈 71.5×3	O-RING 71.5×3	1	
20	GB/T 70.1-2000	内六角圆柱头螺钉 M6×18	BOLT M6×18	4	
21	12211-F39-0000	凸轮轴端盖	CAP TENSIONER CASE	1	
22	91203-F39-0000	O型密封圈 18.7×2.45	O-RING 18.7×2.45	1	
23	GB/T 70.1-2000	内六角圆柱头螺钉 M6×20	BOLT M6×20	1	
24	GB/T 16674-1996	六角法兰面螺栓 M6×14	BOLT M6×14	1	
25	90603-F39-0000	垫圈 6.2×13×1.5	WASHER 6.2×13×1.5	1	



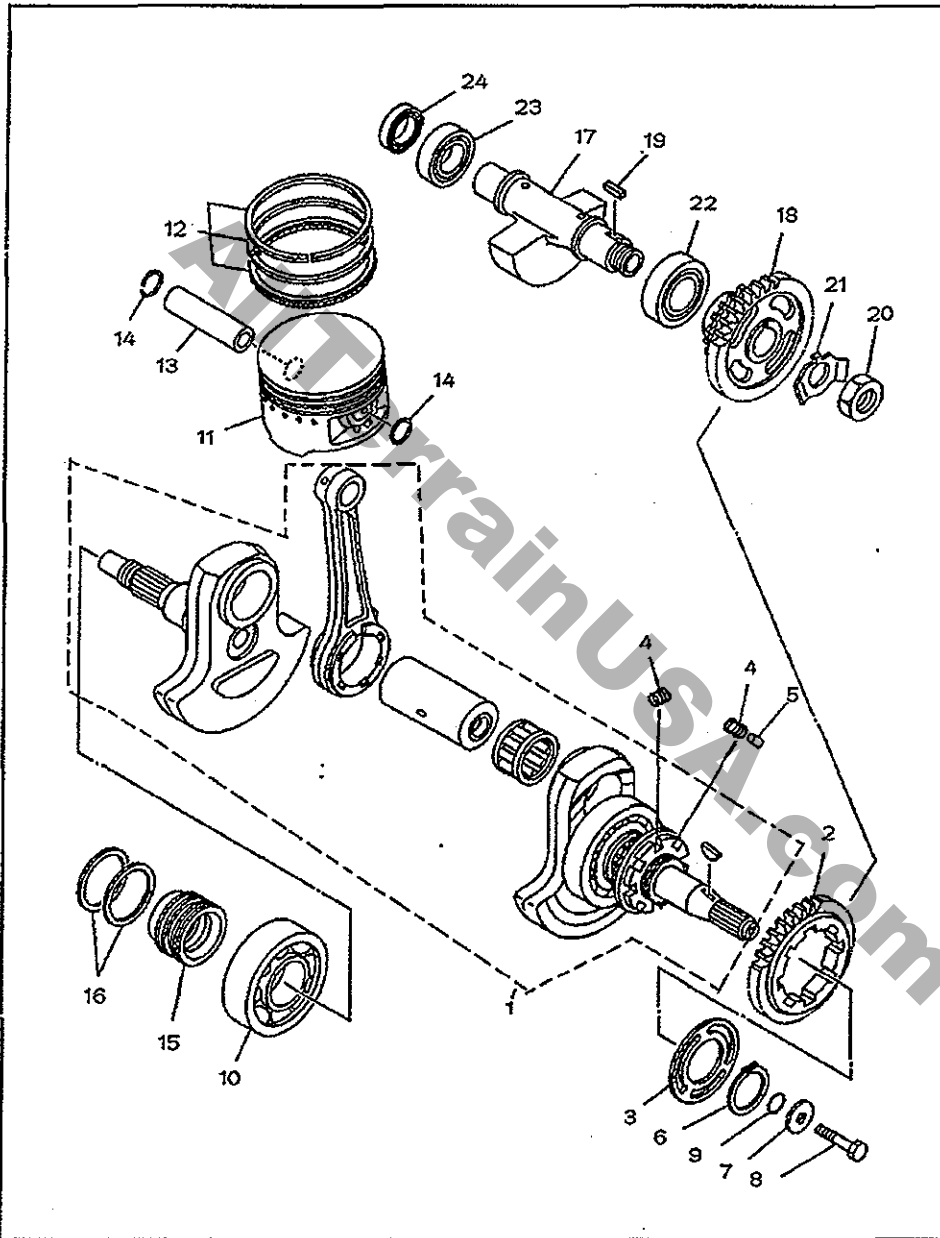










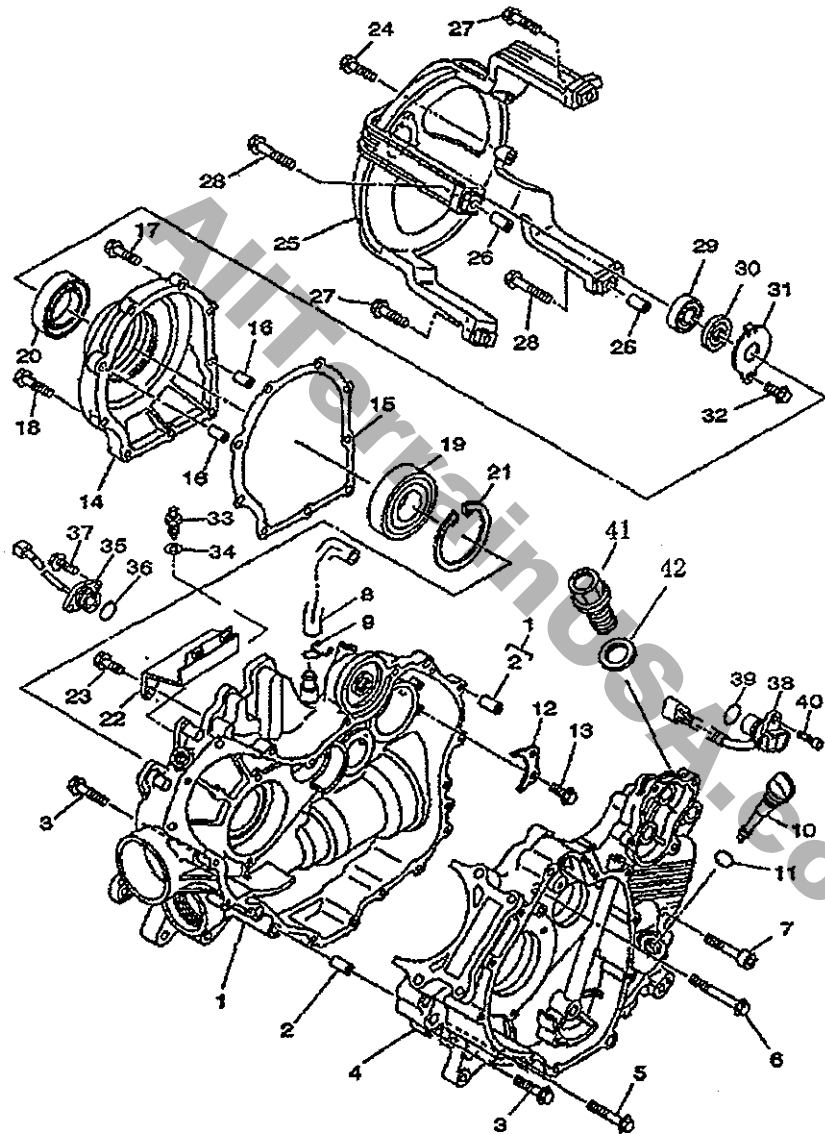


## 七.曲柄连杆,活塞 700CRANKSHAFT PISTON

序号 No.	零部件图号 Part No.	零部件名称 及规格	Part Name And Standard	数量 Q'TY	备注 REMARK
1	13200-F39-0000	曲轴连杆组件	CRANKSHAFT ASSY	1	
2	13304-F39-0000	平衡主动齿	GEAR DRIVE	1	
3	13305-F39-0000	主动齿限位板	WASHER BEARING COVER	1	
4	13302-F39-0000	缓冲弹簧	SPRING COMPRESSION	8	
5	13303-F39-0000	销 6×9.4	PIN DOWEL 6×9.4	4	
6	90701-F39-0000	挡圈 35	CIRCLIP 35	1	
7	90618-F12-0000	垫圈 10×30×3.2	WASHER 10×30×3.2	1	借 F12
8	GB/T 5783-2000	六角法兰面螺栓 M10×40	BOLT M10×40	1	
9	91207-F39-0000	O 型密封圈 16.1×3.1	O-RING 16.1×3.1	1	
10	GB/T 276-1994	轴承 6307	BEARING	1	
11	13101-F39-0000	活塞	PISTON	1	
12	13120-F39-0000	活塞环组件	PISTON RING COMP	1	
13	13111-F39-0000	活塞销	PISTON PIN	1	
14	91301-F39-0000	活塞销挡圈	CIRCLIP	2	
15	13401-F39-0000	密封环套	SEAL RING SHEATH	1	
16	13402-F39-0000	密封环	SEAL CRANK	2	
17	13300-F39-0000	平衡轴组件	WEIGHT 1	1	
18	13320-F39-0000	平衡从动齿组件	BALANCER WEIGHT GEAR COMP.	1	
19	GB/T 1095-2003	键 B5×12.4	KEY STRAIGHT B5×12.4	1	
20	GB/T6172.1-2000	螺母 M18×1	NUT M18×1	1	
21	13321-F39-0000	止退垫圈	WASHER, LOCK	1	
22	GB/T 276-1994	轴承 6305	BEARING 6305	1	
23	GB/T 276-1994	轴承 6304R	BEARING 6304R	1	
24	91101-F39-0000	油封 20×30×7	OIL SEAL 20×30×7	1	



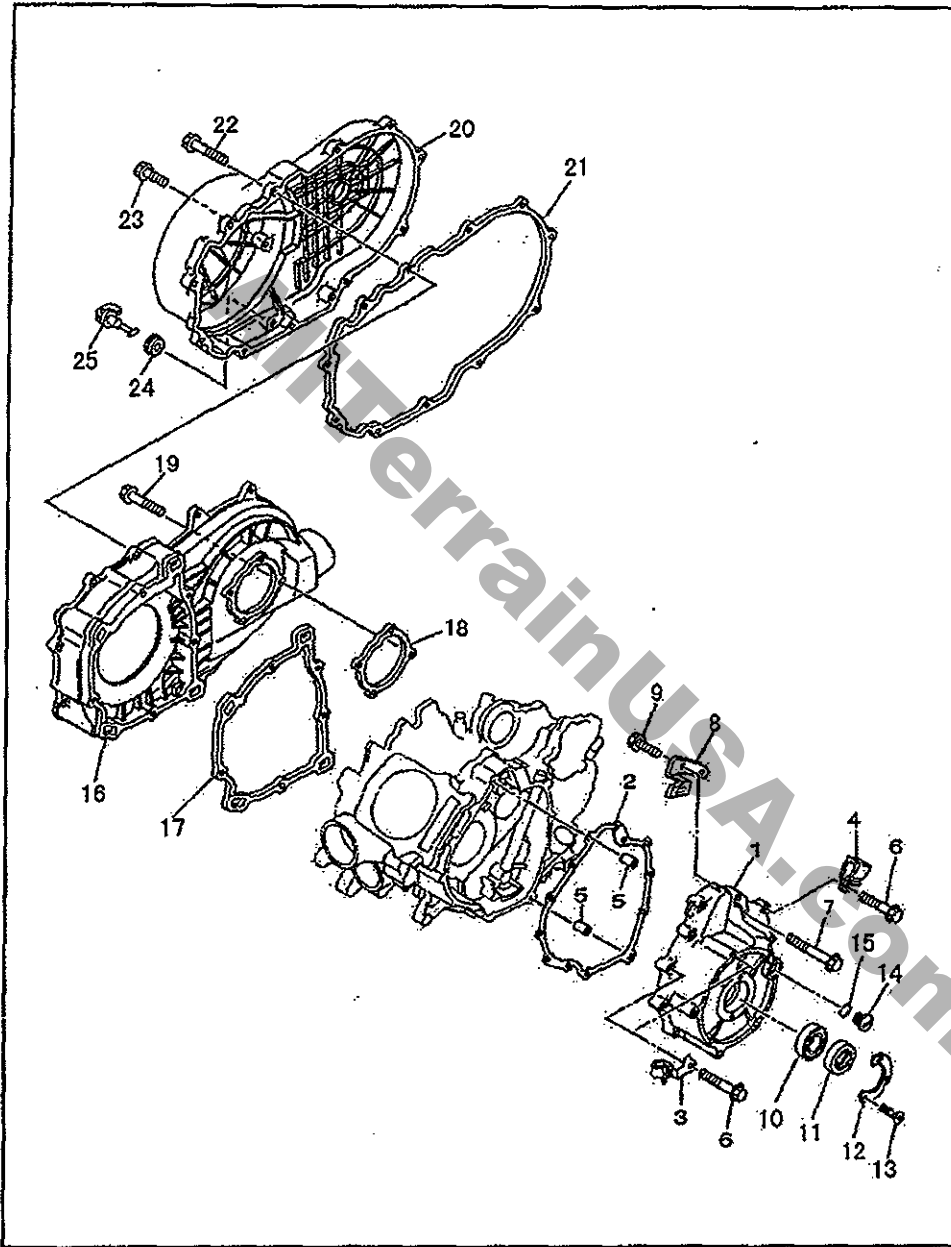




## 十、曲轴箱 CRANKCASE

序号 No.	零部件图号 Part No.	零部件名称 及规格	Part Name And Standard	数量 QTY	备注 REMARK
1	11200-F39-0000	右曲轴箱体组件	CRANKCASE ASSY	1	
2	90803-F11-0000	定位销 10×15.7	DOWEL PIN 10×15.7	2	借F11
3	GB/T 16674-1996	六角法兰面螺栓 M6×30	BOLT M6×30	12	
4	11100-F39-0000	左曲轴箱体组件	CRANKCASE ASSY	1	
5	GB/T 16674-1996	六角法兰面螺栓 M6×40	BOLT M6×40	2	
6	GB/T 5789-1986	六角法兰面螺栓 M6×55	BOLT M6×55	1	
7	GB/T 70.1-2000	内六角圆柱头螺钉 M8	BOLT M8×40	3	
8	91202-058-0000	发动机废气管	PIPE BREATHER 1	1	
9	91503-058-0000	废气管夹	CLIP	1	
10	15651-F39-0000	机油标尺	PLUG OIL LEVEL	1	
11	91216-F39-0000	O型密封圈 20×2.3	O-RING 20×2.3	1	
12	11111-F39-0000	轴承压板	PLATE BEARING COVER	1	
13	GB/T 16674-1996	六角法兰面螺栓 M6×14	BOLT M6×14	2	
14	21240-F39-0000	外罩轴承座	HOUSING BEARING 1	1	
15	21241-F39-0000	轴承座密封垫	GASKET CARBURETOR COVER 2	1	
16	90803-F11-0000	定位销 10×16	DOWEL PIN 10×16	2	借F11
17	GB/T 16674-1996	六角法兰面螺栓 M6×30	BOLT M6×30	7	
18	GB/T 16674-1996	六角法兰面螺栓 M6×40	BOLT M6×40	2	
19	GB/T 276-1994	轴承 16010	BEARING16010	1	
20	91102-F39-0000	油封 35×65×8	OIL SEAL35×65×8	1	
21	90704-F39-0000	挡圈 80	CIRCLIP 80	1	
22	17115-F39-0000	排气管支架	BRACKET	1	
23	GB/T 5789-1986	六角法兰面螺栓 M6×16	BOLT M6×16	2	
24	GB/T 5789-1986	六角法兰面螺栓 M6×20	BOLT M6×20	2	
25	11330-F39-0000	离合器护罩支架	HOUSING, BEARING	1	

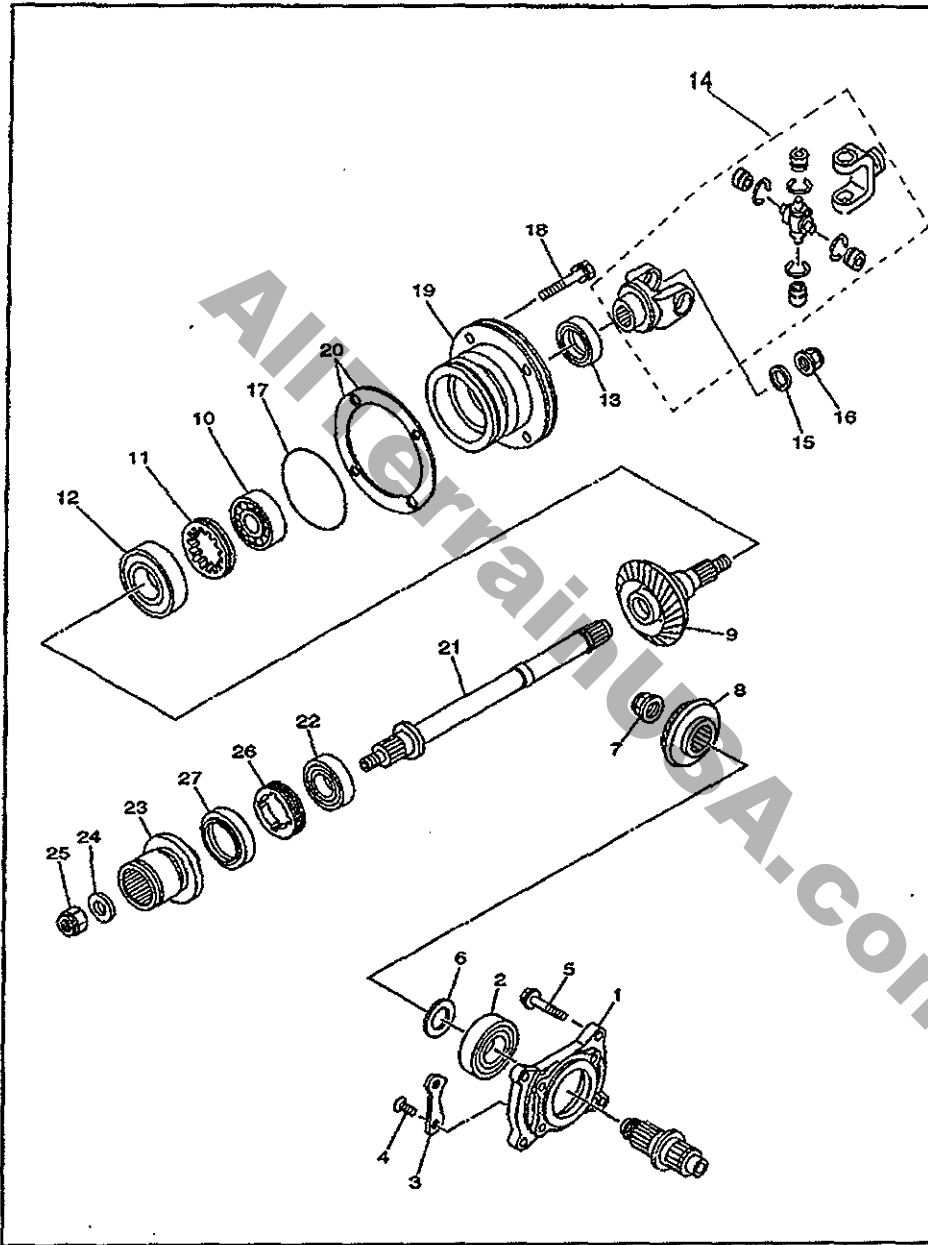




## 十一、曲轴箱盖 CRANKCASE COVER 1

序号 No.	零部件图号 Part No.	零部件名称 及规格	Part Name And Standard	数量 QTY	备注 REMARK
1	11321-F39-0000	左前盖	COVER CRANKCASE 1	1	
2	11323-F39-0000	左前盖密封垫	GASKET CRANKCASE COVER 1	1	
3	91501-F39-0000	管夹 I	CLAMP	1	
4	91601-F39-0000	线夹 I	CLAMP	1	
5	90803-F11-0000	定位销 10×15.7	PIN DOWEL	2	借 F11
6	GB/T 16674-1996	六角法兰面螺栓 M6×30	BOLT M6×30	9	
7	GB/T 16674-1996	六角法兰面螺栓 M6×40	BOLT M6×40	4	
8	11322-F39-0000	压线板	PLATE	1	
9	GB/T 16674-1996	六角法兰面螺栓 M6×14	BOLT M6×14	2	
10	GB/T 276-1994	轴承 60/28	BEARING 60/28	1	
11	91103-F12-0000	油封 28×52×8.2	OIL SEAL 28×52×8.2	1	借 F12
12	11324-F11-0000	油封压板	WASHER THRUST	1	借 F11
13	GB/T 819.1-2000	十字沉头螺钉 M5×16	SCREW M5×16	2	
14	11325-F19-0000	观察孔盖	HAND HOLE COVER	1	借 F19
15	91209-F39-0000	O 形圈 13.4×2.35	O-RING 13.4×2.35	1	
16	11450-F39-0000	离合器盖座组件	COVER CRANKCASE 2	1	
17	11411-F39-0000	离合器盖座密封垫 I	CLUTCH CRANKCASE CUSHION I	1	
18	11412-F39-0000	离合器盖座密封垫 II	CLUTCH CRANKCASE CUSHION II	1	
19	GB/T 5789-1986	六角法兰面螺栓 M6×30	BOLT M6×30	7	
20	11400-F39-0000	离合器盖组件	COVER CRANKCASE 3	1	
21	11413-F39-0000	离合器盖密封垫	CLUTCH CRANKCASE CUSHION	1	
22	GB/T 5789-1986	六角法兰面螺栓 M6×25	BOLT M6×25	12	
23	GB/T 5789-1986	六角法兰面螺栓 M6×16	BOLT M6×16	2	
24	11403-F12-0000	胶套 1	GROMMET	1	借 F12
25	11404-F12-0000	离合器盖堵头	PLUG DRAIN	1	借 F12





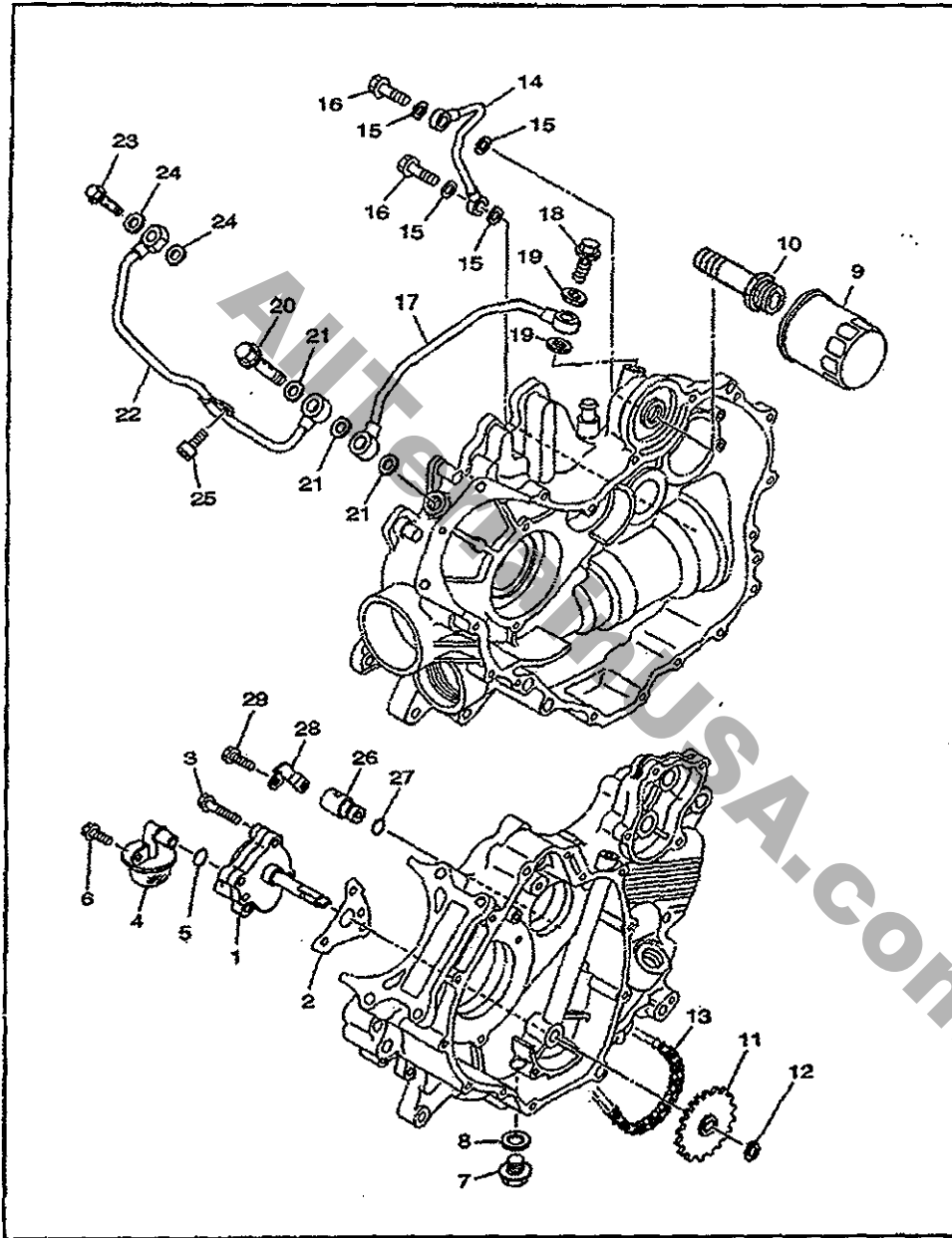
## 十三.中间传动系 MIDDLE DRIVE GEAR

序号 No.	零部件图号 Part No.	零部件名称 及规格	Part Name And Standard	数量 Q'TY	备注 REMARK
1	22140-F39-0000	X 输出轴轴承座	HOUSING BEARING	1	
2	GB/T 276-1994	轴承 6305	BEARING6305	1	
3	22142-F12-0000	轴承压板	PLATE BEARING COVER	2	借F12
4	GB/T 819.2-1997	十字槽沉头螺钉 M8×24	SCREW M8×24	4	
5	GB/T 5789-1986	六角法兰面螺栓 M8×30	BOLT M6×30	4	
6	90606-F39-0000	垫圈 26×38×(0.10~0.60)	WASHER 26×38×(0.10~0.60)	1	不经过
7	GB/T 6172.1-2000	螺母 M22	NUT M22	1	
8	22141-F39-0000	主动锥齿轮	MIDDLE GEAR COMP.	1	
9	22150-F39-0000	从动锥齿轮	SIDE WIMBLE GEAR	1	
10	GB/T 276-1994	轴承 6207	BEARING6207	1	
11	22158-F39-0000	锁紧环 M60×1.5(左)	LOCKED RING M60×1.5(左)	1	
12	GB/T 276-1994	轴承 63/22	BEARING63/22	1	
13	91106-F12-0000	油封 30×46×8	OIL SEAL 30×46×8	1	借F12
14	22160-F39-0000	万向节组件	COUPLING	1	
15	90607-F39-0000	垫圈 16.5×28×4	WASHER 16.5×28×4	1	
16	90301-F39-0000	自锁螺母 M16	NUT M16	1	
17	91201-F11-0000	O形圈 88×2.8	O-RING 88×2.8	1	借F11
18	GB/T 9074.14-88	六角头螺栓和平垫圈组合件 M8×30	BOLT M8×30	4	
19	22151-F39-0000	Y 输出轴轴承座	HOUSING BEARING	1	
20	22152-F39-0000	垫圈 (0.10~0.60)	WASHER 26×38×(0.10~0.60)	1	
21	22156-F39-0000	Y 输出轴	Y OUTPUT SHAFT	1	
22	GB/T 276-1994	轴承 6205	BEARING6205	1	
23	22190-F39-0000	后驱联轴器组件	FLANGE COUPLING	1	
24	90618-F39-0000	垫圈 14.2×32×5	WASHER 14.2×32×5	1	
25	90301-F12-0000	自锁螺母 M14	NUT M14	1	借F12









## 十六、机油泵 OIL PUMP

序号 No.	零部件图号 Part No.	零部件名称 及规格	Part Name And Standard	数量 QTY	备注 REMARK
1	15100-F39-0000	机油泵组件	OIL PUMP ASSY	1	
2	15101-F39-0000	机油泵纸垫	GASKET PUMP COVER	1	
3	GB/T 16674-1996	六角法兰面螺栓 M6×40	BOLT M6×40	3	
4	15300-F39-0000	机油滤网组件	STRAINER HOUSING ASSY	1	
5	91210-F39-0000	O形圈 14×2.3	O-RING 14×2.3	1	
6	GB/T 16674-1996	六角法兰面螺栓 M6×14	BOLT M6×14	1	
7	GB/T 5789-1986	放油螺塞 M14×1.5-6H-16	BOLT M14×1.5-6H-16	1	
8	90612-F39-0000	垫圈 14×22×1	WASHET 14×22×1	1	
9	15200-F39-0000	机油滤清器组件	ELEMENT ASSY OIL CLEANER	1	
10	15201-F39-0001	滤清器接头	BOLT UNION	1	
11	15202-F39-0000	油泵从动链轮	SPROCKET DRIVEN	1	
12	90703-F39-0000	挡圈 11	CIRCLIP 11	1	
13	04CH-70	油泵链条	OIL PUMP CHAIN	1	
14	15301-F39-0000	油管 I	PIPE DELIVERY 1	1	
15	90613-F39-0000	垫圈 8.4×15×2	WASHET 8.4×15×2	4	
16	15304-F39-0000	油管螺栓 I M8×20	BOLT I M8×20	2	
17	15302-F39-0000	油管 II	PIPE DELIVERY 2	1	
18	15305-F39-0000	油管螺栓 II M14×28.5	BOLT II M14×28.5	1	
19	90609-F39-0000	垫圈 14×20×1.5	WASHET 14×20×1.5	2	
20	15307-F39-0000	油管螺栓 IV M14×50	BOLT IV M14×50	1	
21	90609-F39-0000	垫圈 14×20×1.5	WASHET 14×20×1.5	2	
22	15303-F39-0000	油管 III	PIPE DELIVERY 3	1	
23	15306-F39-0000	油管螺栓 III M10×21	BOLT III M14×50	1	
24	90614-F39-0000	垫圈 10.2×16×1.2	WASHET 10.2×16×1.2	2	
25	GB/T 70.1-2000	内六角圆柱头螺钉 M6×12	BOLT M6×12	1	













